

**LECR6 - Dimensions**  
**Patio:** 10'-0" x 11'-0"  
**Unfinished Lower Level:** 31'-0" x 25'-2"

**LECR5 - Dimensions**  
**Patio:** 11'-5" x 8'-8"  
**Unfinished Lower Level:** 24'-11" x 24'-5"

**LECR4 - Dimensions**  
**Patio:** 11'-0" x 10'-0"  
**Unfinished Lower Level:** 24'-11" x 30'-4"





**LECR6 - Dimensions**

- Two Car Garage:** 21'-4" x 19'-8"
- Storage:** 6'-0" x 8'-4"
- Deck:** 10'-0" x 11'-1"
- Dining:** 15'-0" x 10'-11"
- Great Room:** 13'-0" x 13'-11"
- Kitchen:** 8'-0" x 17'-5"
- Kitchen Island:** 3'-3" x 10'-10"
- Boot Room:** 5'-8" x 5'-7"
- PR:** 6'-9" x 2'-7"
- Entry:** 5'-6" x 10'-11"
- Porch:** 6'-0" x 4'-0"

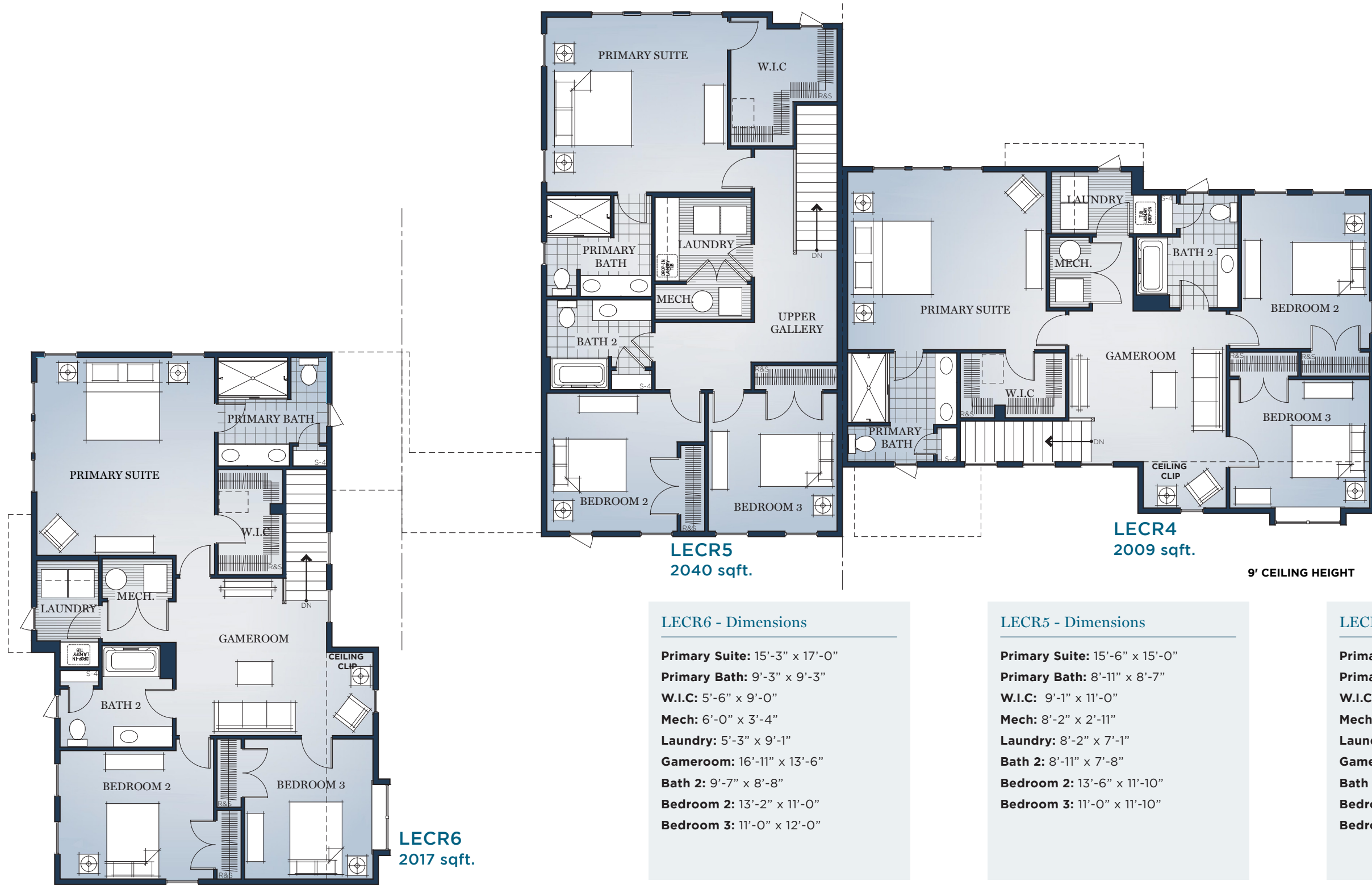
**LECR5 - Dimensions**

- Two Car Garage:** 19'-0" x 19'-2"
- Deck:** 11'-5" x 8'-2"
- Great Room:** 21'-2" x 15'-7"
- Kitchen:** 13'-3" x 8'-3"
- Kitchen Island:** 10'-1" x 3'-3"
- Boot Room:** 5'-10" x 5'-2"
- PR:** 5'-3" x 5'-11"
- Entry:** 5'-5" x 16'-5"

**LECR4 - Dimensions**

- Two Car Garage:** 19'-8" x 21'-4"
- Storage:** 8'-4" x 6'-0"
- Deck:** 11'-1" x 10'-0"
- Dining:** 10'-11" x 15'-0"
- Great Room:** 13'-11" x 13'-0"
- Kitchen:** 17'-6" x 8'-0"
- Kitchen Island:** 10'-7" x 3'-3"
- Boot Room:** 5'-7" x 5'-8"
- PR:** 2'-7" x 6'-9"
- Great Room:** 13'-11" x 13'-0"
- Entry:** 10'-11" x 4'-11"
- Porch:** 4'-0" x 6'-0"

Images shown with options.  
 Renderings, materials, finishes, and fixtures included are for illustrative and marketing purposes only.  
 Scale and dimensions are approximate and may vary based on normal construction tolerances.  
 © 2023 Charter Homes & Neighborhoods. All rights reserved. Do not duplicate or distribute without written consent. v.23073



**LE CR6 - Dimensions**

- Primary Suite:** 15'-3" x 17'-0"
- Primary Bath:** 9'-3" x 9'-3"
- W.I.C.:** 5'-6" x 9'-0"
- Mech:** 6'-0" x 3'-4"
- Laundry:** 5'-3" x 9'-1"
- Gameroom:** 16'-11" x 13'-6"
- Bath 2:** 9'-7" x 8'-8"
- Bedroom 2:** 13'-2" x 11'-0"
- Bedroom 3:** 11'-0" x 12'-0"

**LE CR5 - Dimensions**

- Primary Suite:** 15'-6" x 15'-0"
- Primary Bath:** 8'-11" x 8'-7"
- W.I.C.:** 9'-1" x 11'-0"
- Mech:** 8'-2" x 2'-11"
- Laundry:** 8'-2" x 7'-1"
- Bath 2:** 8'-11" x 7'-8"
- Bedroom 2:** 13'-6" x 11'-10"
- Bedroom 3:** 11'-0" x 11'-10"

**LE CR4 - Dimensions**

- Primary Suite:** 17'-0" x 15'-3"
- Primary Bath:** 9'-4" x 9'-3"
- W.I.C.:** 9'-0" x 5'-6"
- Mech:** 3'-4" x 6'-0"
- Laundry:** 9'-1" x 5'-3"
- Gameroom:** 13'-6" x 16'-11"
- Bath 2:** 8'-8" x 9'-7"
- Bedroom 2:** 11'-0" x 13'-2"
- Bedroom 3:** 12'-0" x 11'-0"