

Lower Level

LOWER LEVEL
38' 8" X 56' 8"

UNFINISHED
LOWER
LEVEL

Elevation 10
Ceiling Height 9' 0"

UNFINISHED
LOWER
LEVEL

Elevation 20
+ 44 SQFT

UNFINISHED
LOWER
LEVEL

Elevation 30
+40 SQFT



Every Charter home is unique and as a result your home may have minor variations in dimensions. In addition, renderings include furniture, landscaping, appliances, options, selections, and finishes that may be available for an additional cost or not at all. Please ask your Sales Manager should you have any specific questions.
The square footage of the home may vary based on which measuring standard is applied

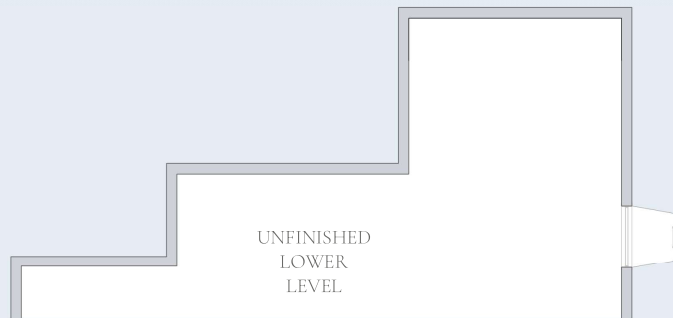
Copyright ©2025 Charter Homes & Neighborhoods. Any use or reproduction in whole or part without the expressed consent of Charter is prohibited.

ANDOVER - Lower Level



Lower Level

LOWER LEVEL
38' 8" X 58' 8"



Lower Level - Expanded Bedroom 1
+28 SQFT

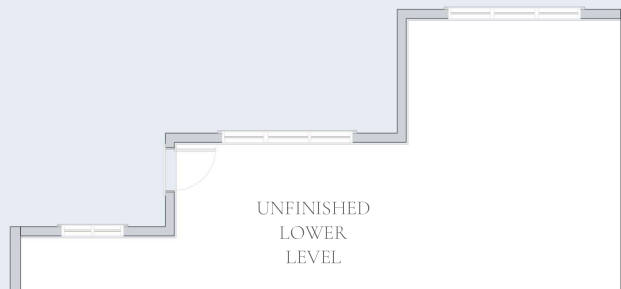
LOWER LEVEL
38' 8" X 56' 8"



Lower Level - Kitchen 3/4
+20 SQFT

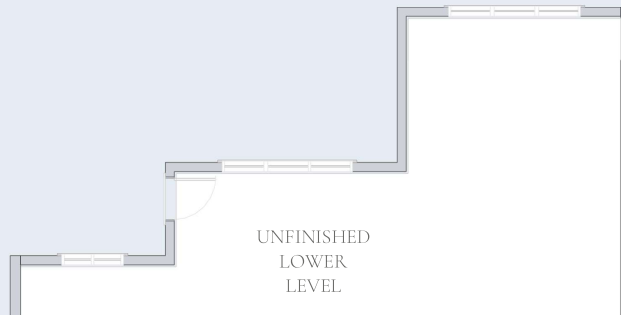
Lower Level

LOWER LEVEL
38' 8" X 56' 8"



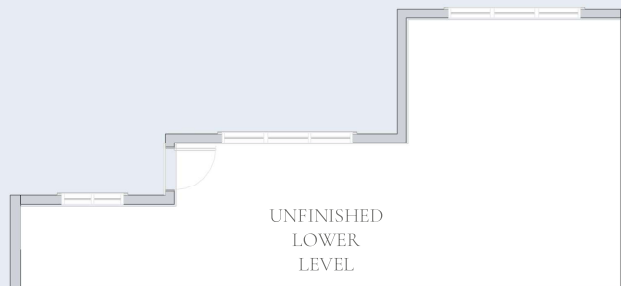
Walkout Lower Level

LOWER LEVEL
38' 8" X 58' 8"



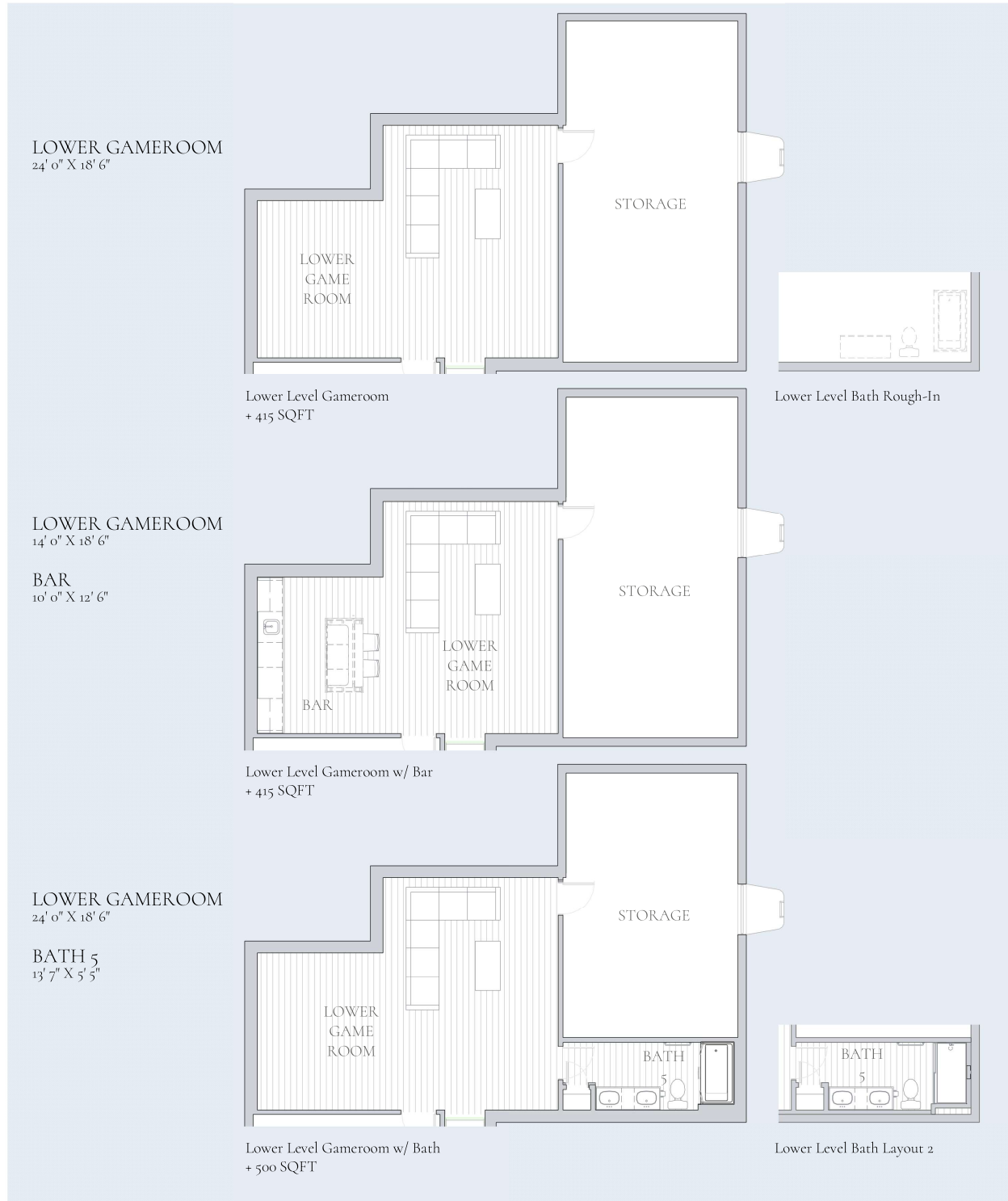
Walkout Lower Level - Expanded Bedroom 1
+28 SQFT

LOWER LEVEL
38' 8" X 56' 8"



Walkout Lower Level - Kitchen Layout - 3/4
+20 SQFT

Lower Level

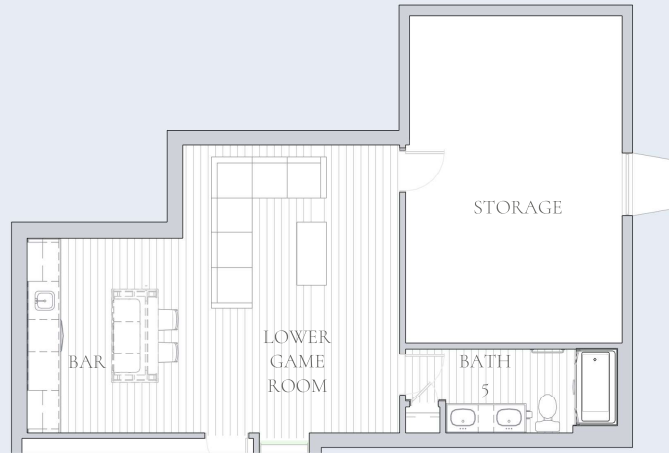


Lower Level

LOWER GAMEROOM 14' 0" X 18' 6"

BAR
10' 0" X 12' 6"

BATH 5
13' 7" X 5' 5"

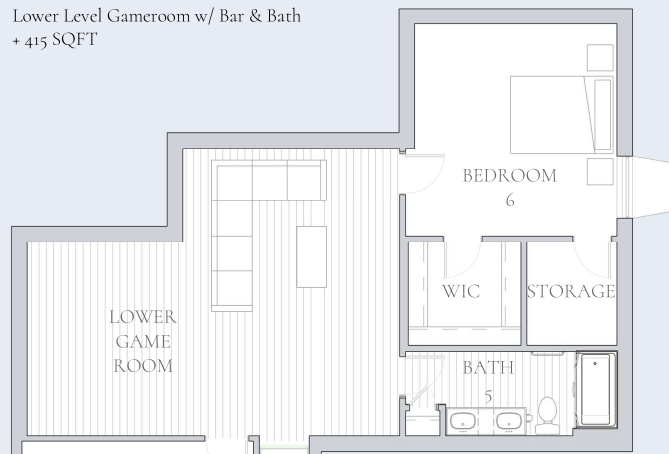


Lower Level Gameroom w/ Bar & Bath
+ 415 SQFT

LOWER GAMEROOM 24' 0" X 18' 6"

BATH 5
13' 7" X 5' 5"

BEDROOM 6
13' 0" X 13' 8"



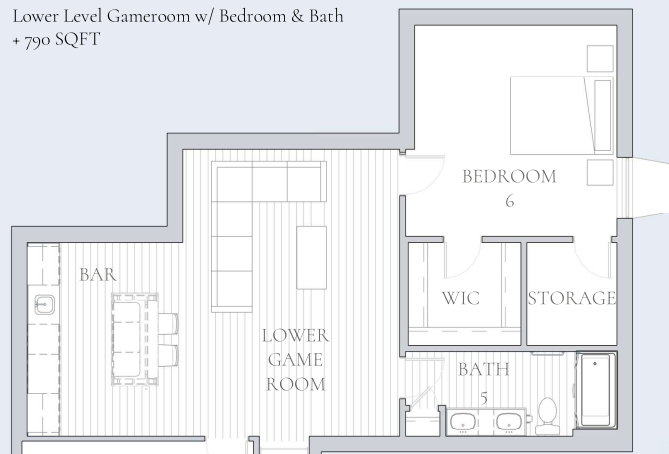
Lower Level Gameroom w/ Bedroom & Bath
+ 790 SQFT

LOWER GAMEROOM 14' 0" X 18' 6"

BAR
10' 0" X 12' 6"

BATH 5
13' 7" X 5' 5"

BEDROOM 6
13' 0" X 13' 8"



Lower Level Gameroom w/ Bedroom, Bath & Bar
+ 790 SQFT



Every Charter home is unique and as a result your home may have minor variations in dimensions. In addition, renderings include furniture, landscaping, appliances, options, selections, and finishes that may be available for an additional cost or not at all. Please ask your Sales Manager should you have any specific questions.
The square footage of the home may vary based on which measuring standard is applied

Copyright ©2025 Charter Homes & Neighborhoods. Any use or reproduction in whole or part without the expressed consent of Charter is prohibited.

ANDOVER - Lower Level

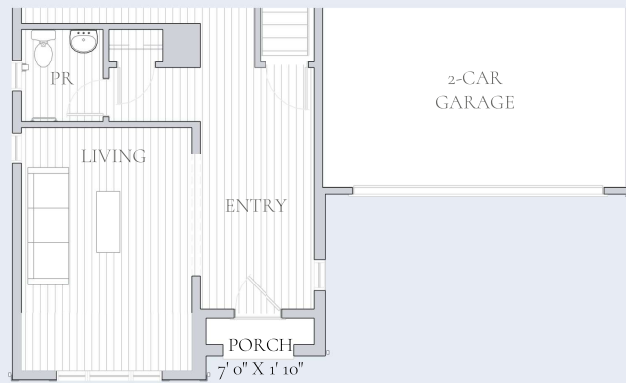


First Floor



First Floor

LIVING
11' 0" X 15' 8"



Elevation 20
+ 50 SQFT

LIVING
11' 0" X 11' 8"



Elevation 30
+ 46 SQFT



Every Charter home is unique and as a result your home may have minor variations in dimensions. In addition, renderings include furniture, landscaping, appliances, options, selections, and finishes that may be available for an additional cost or not at all. Please ask your Sales Manager should you have any specific questions.
The square footage of the home may vary based on which measuring standard is applied

Copyright ©2025 Charter Homes & Neighborhoods. Any use or reproduction in whole or part without the expressed consent of Charter is prohibited.

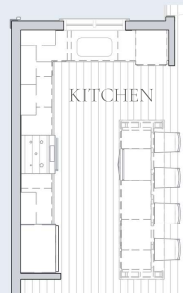
ANDOVER - First Floor



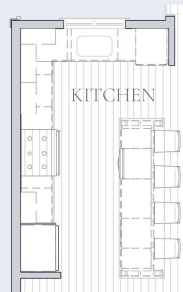
First Floor

KITCHEN Layout 3/4
9' 8" X 15' 8"

BATH 1
5' 3" X 12' 7"



Kitchen Layout 3
+ 20 SQFT



Kitchen Layout 4
+ 20 SQFT



Bath 1 Layout 2



Bath 1 Layout 4



Bath 1 Layout 6

Second Floor

UPPER GAMEROOM
13' 2" X 18' 0"

BATH 2
7' 4" X 8' 3"

BEDROOM 2
15' 0" X 10' 7"

W.I.C.
5' 5" X 5' 8"

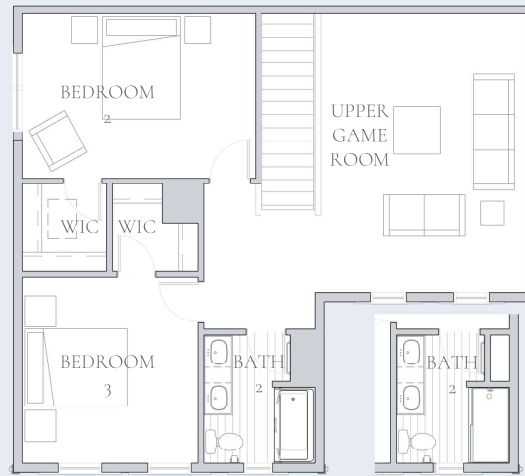
BEDROOM 3
11' 4" X 12' 0"

W.I.C.
5' 6" X 5' 8"

BEDROOM 4
13' 2" X 12' 5"

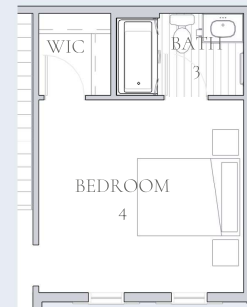
W.I.C.
4' 8" X 5' 2"

BATH 3
8' 2" X 5' 2"

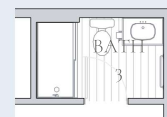


Elevation 10
Ceiling Height 9' 0"

Bath 2 Layout 2



Bedroom ILO Gameroom



Bath 3 Layout 2

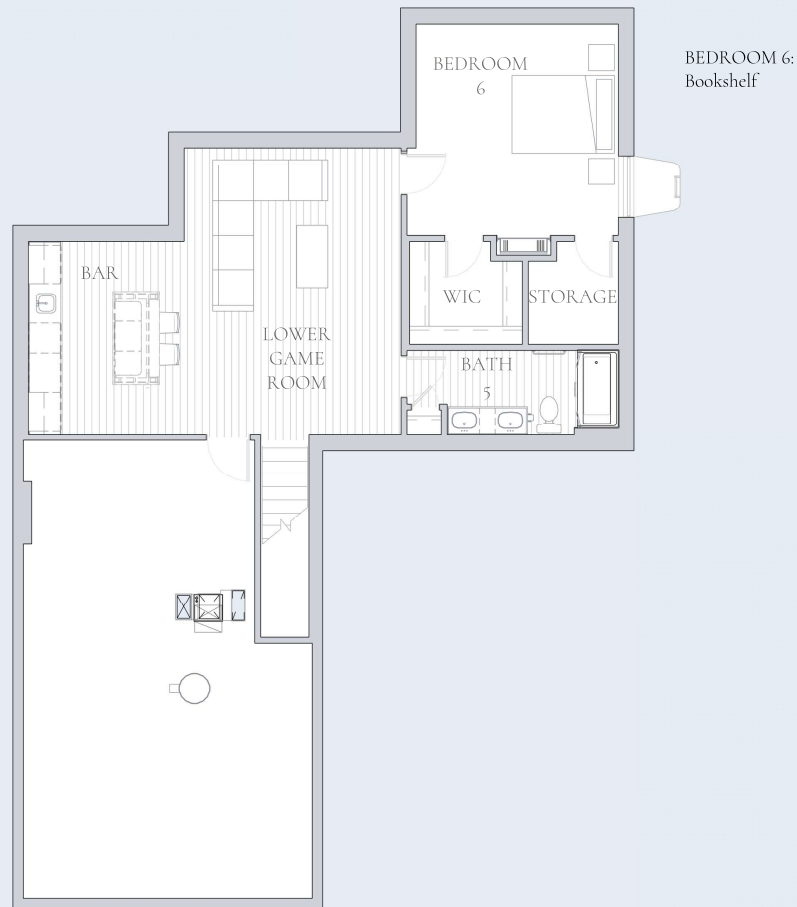


Elevation 20
+ 43 SQFT



Elevation 20
+7 SQFT

Lower Level - Add Details



First Floor - Add Details



Second Floor - Add Details



Always Included

Contemporary designer finishes

- Slim recessed lighting with dimmer switches in great room, gathering
- Designer maple flat panel kitchen cabinets with stain
- Laminate square edged kitchen countertops with tile backsplash
- Cultured marble vanity tops with backsplash and integrated designer bowl
- Designer pedestal sink in powder room
- Standard height toilets
- Luxury vinyl plank flooring in entry, bathrooms, laundry, kitchen & gathering spaces
- Carpet in bedrooms
- Designer stainless steel appliances including electric range, microwave, and dishwasher
- Chrome bath fixtures, toilet paper holder, and towel rod
- Half walls with designer caps at stairways
- Oversized interior window casing and 5-1/2" baseboard
- 2 panel or 6 panel interior doors with brushed nickel knobs and hinges
- Interior flat latex wall colors in Pure White, Natural Tan or First Star with Pure White semigloss on interior trim
- Installation of designer exterior lighting fixtures

Landscaping to enhance your home

- Landscaping design package includes hedge and seeded lawn tree-planting to enhance curb appeal and vary streetscape
- Extra-wide poured concrete entry walkway
- Paved asphalt driveway

Efficient systems for comfort and convenience

- 200 amp home electric service
- High-efficiency 92% AFUE gas furnace
- High-efficiency 14.4 SEER central air conditioner
- WiFi enabled programmable thermostat
- Large capacity 50-gallon high efficiency water heater
- Resilient PEX water supply system with accessible shut-off valves
- High-bandwidth CAT-6 network wiring
- Garage door openers with remotes
- Front and rear exterior hose bibs

Building components deliver timeless performance

- Architectural dimensional asphalt shingles
- Fiber cement exterior siding featuring colorfast technology
- Energy efficient vinyl windows with Low E glass and removable screens
- Oversized fiberglass dent resistant entry doors with deadbolt

A structure built to last

- Poured concrete foundation walls with interior and exterior basement footing drains and exterior damp proofing
- 2x6 exterior house wall framing with 7/16" wall sheathing
- R-21 batt insulation installed within all 2x6 exterior walls
- R-13 vinyl wrapped insulation applied to all unfinished basement walls
- Foam sealant applied at all exterior joints
- 3/4" tongue & groove subfloor
- Engineered roof trusses



Every Charter home is unique and as a result your home may have minor variations in dimensions. In addition, renderings include furniture, landscaping, appliances, options, selections, and finishes that may be available for an additional cost or not at all. Please ask your Sales Manager should you have any specific questions.
The square footage of the home may vary based on which measuring standard is applied

Copyright ©2025 Charter Homes & Neighborhoods. Any use or reproduction in whole or part without the expressed consent of Charter is prohibited.

ANDOVER - Always Included

