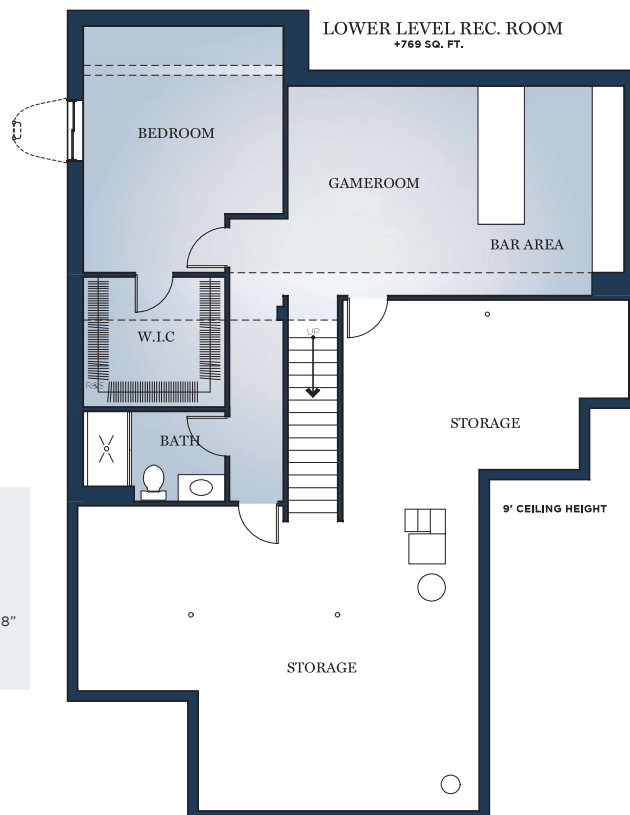
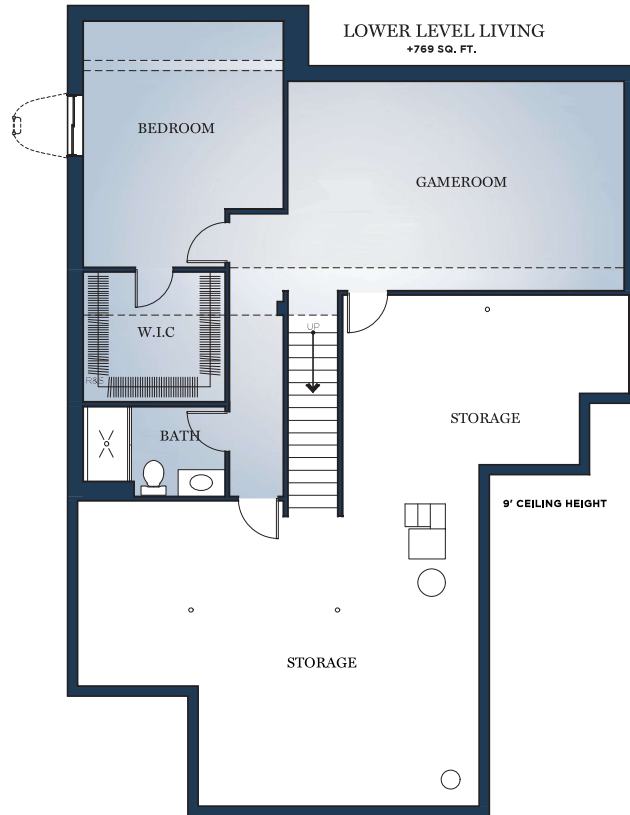


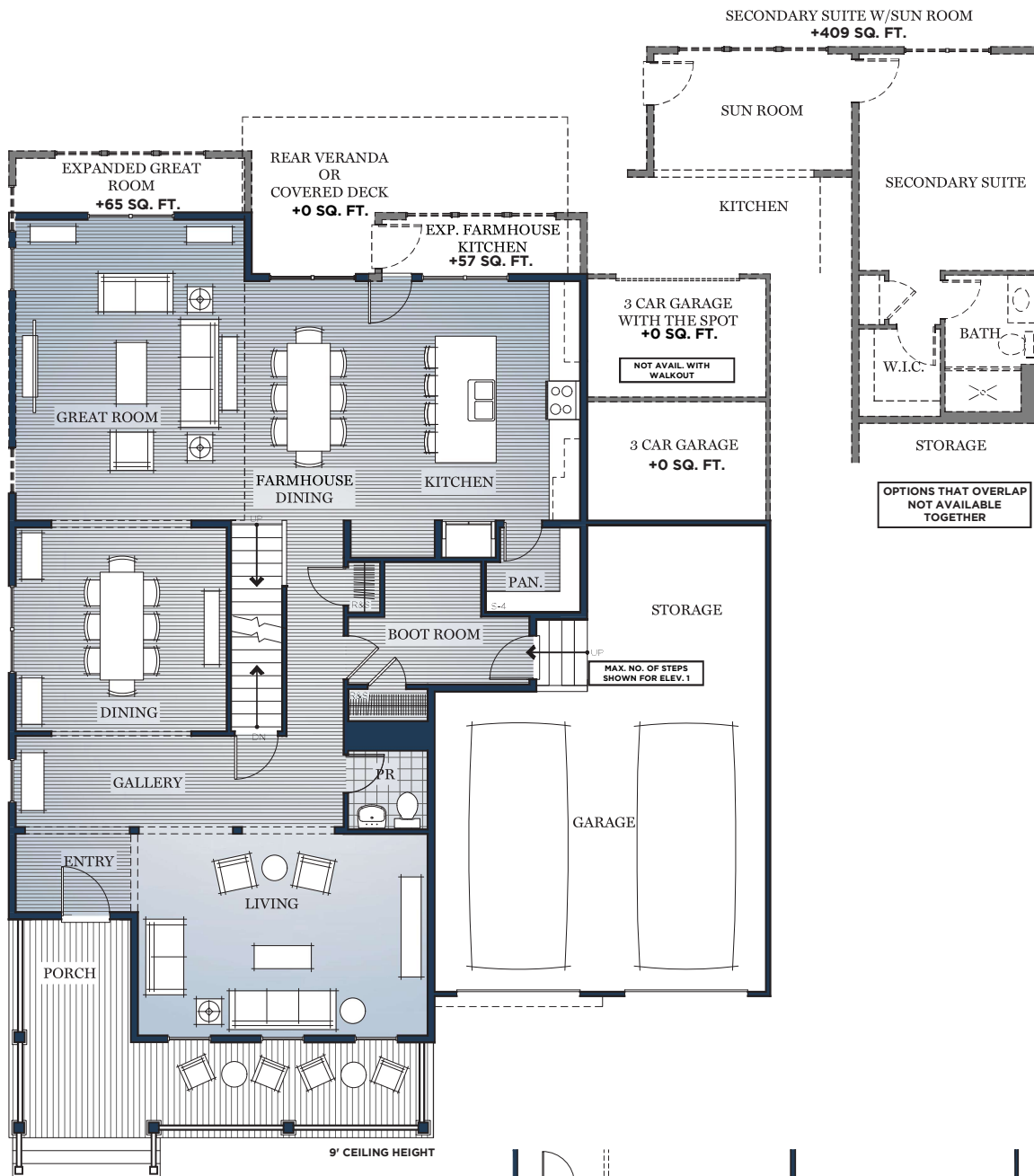
Dimensions
Gameroom: 35'-6" x 25'-1"
Lower Level Bath: 9'-2" x 5'-11"



#### Dimensions

Lower Level Living Gameroom: 22'-1" x 13'-8"  
Lower Level Bedroom: 13'-0" x 16'-2"  
Lower Level WIC: 9'-2" x 8'-7"  
Lower Level Rec Room Gameroom: 12'-5" x 13'-8"  
Lower Level Bar Area: 9'-8" x 13'-8"  
Lower Level Bath: 9'-2" x 5'-11"





## Dimensions

**Farmhouse Dining:** 11'-0" x 15'-5"

**Kitchen:** 11'-0" x 15'-5"

**Kitchen Island:** 8'-2" x 4'-0"

**Boot Room:** 11'-9" x 7'-10"

**Storage:** 11'-7" x 10'-9"

**Garage:** 21'-7" x 19'-5"

**PR:** 5'-1" x 5'-0"

**Living:** 18'-11" x 13'-0"

**Porch:** 27' x 14'

**Entry:** 7'-4" x 5'-0"

**Dining:** 13'-9" x 13'-2"

**Great Room:** 14'-11" x 19'-5"

**Expanded Great Room:**

14'-11" x 23'-5"

**Expanded Farmhouse Kitchen:**

11'-0" x 19'-5"

**Rear Veranda:** 21'-10" x 8'-0"

**Covered Deck:** 22'-0" x 8'-0"

**Sun Room:** 12'-11" x 7'-5"

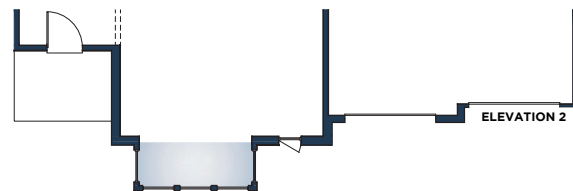
**Secondary Suite:** 11'-5" x 14'-0"

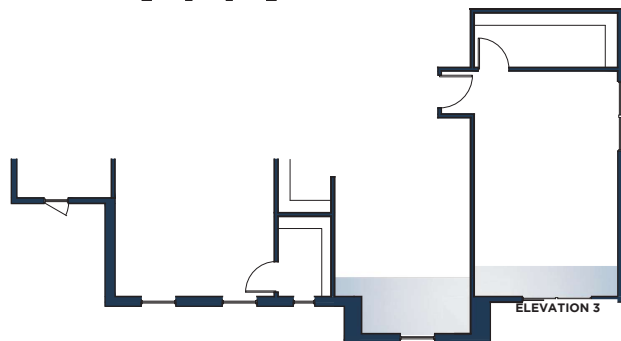
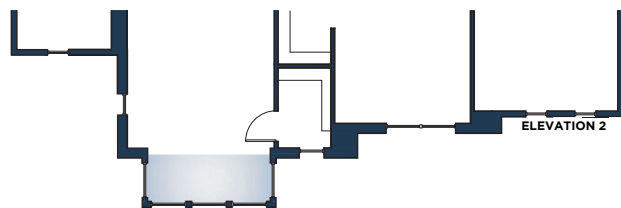
**Bath:** 5'-10" x 9'-1"

**W.I.C.:** 5'-3" x 5'-7"

**3 Car Garage:** 21'-7" x 38'-3"

**3 Car Garage With The Spot:**  
21'-7" x 46'-3"





#### Dimensions

**Primary Suite:** 21'-4" x 15'-3"  
**PS W.I.C. 1:** 8'-8" x 6'-10"  
**PS W.I.C. 2:** 6'-0" x 7'-5"  
**Primary Bath:** 11'-7" x 6'-3"  
**Bedroom 4:** 11'-7" x 17'-6"  
**Bedroom 3:** 11'-0" x 12'-1"  
**Bedroom 3 W.I.C.:** 4'-3" x 5'-8"  
**Laundry:** 8'-8" x 7'-5"  
**Bedroom 2:** 12'-11" x 13'-2"  
**Bedroom 2 W.I.C.:** 4'-3" x 6'-5"  
**Bath 2:** 7'-7" x 8'-1"  
**Gameroom:** 13'-9" x 15'-10"  
**Bedroom ILO Gameroom:**  
 13'-9" x 13'-3"  
**Primary Bath 7:** 12'-4" x 6'-7"  
**Add Full Bath:** 11'-7" x 5'-9"



