



Dimensions

Gameroom: 27'-6" x 25'-4"

Lower Level Bath: 10'-8" x 5'-11"





Dimensions

Lower Level Living Gameroom: 16'-3" x 23'-4"

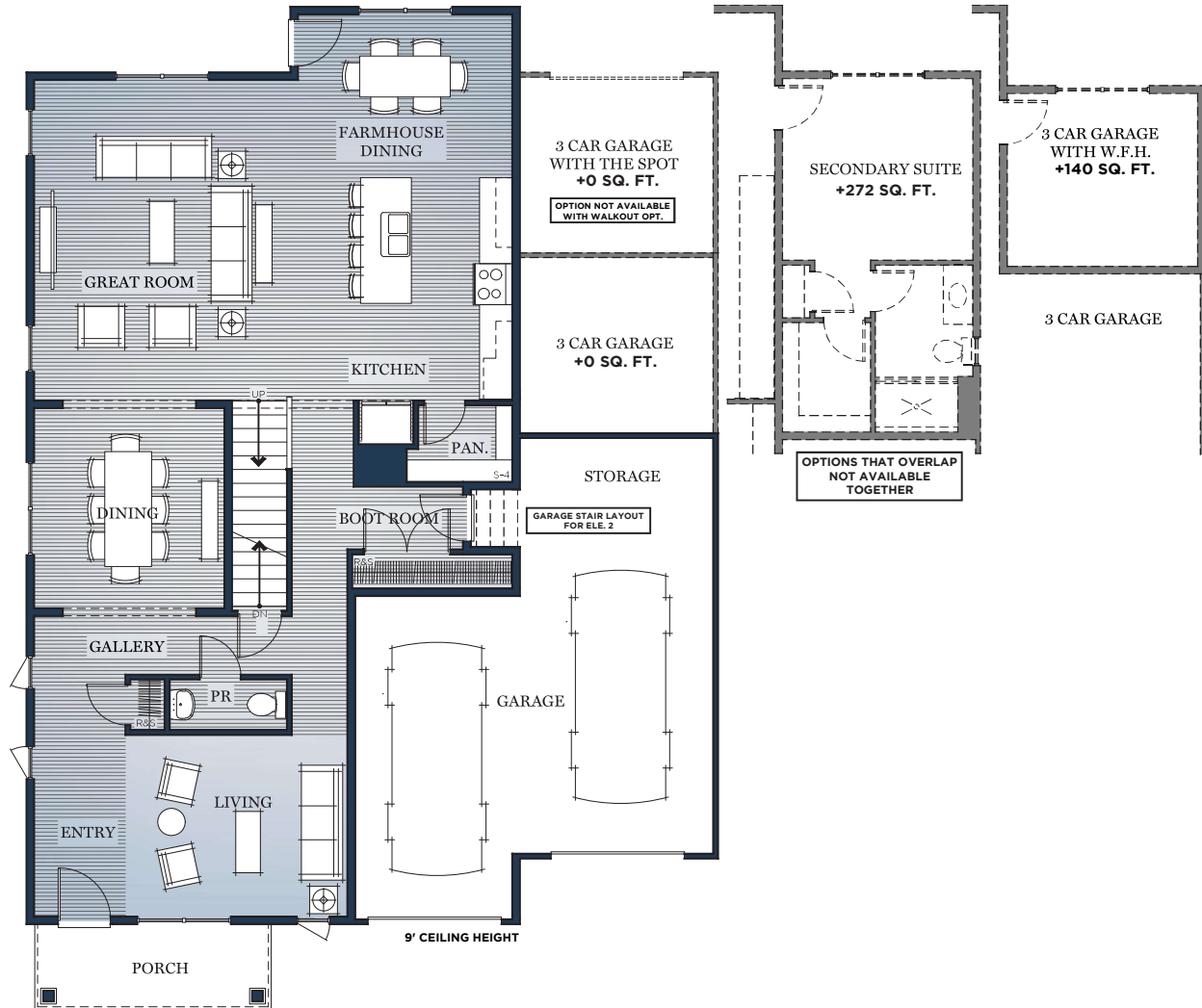
Lower Level Bedroom: 10'-8" x 11'-6"

Lower Level Bath: 10'-8" x 5'-11"

Lower Level Rec Room Gameroom: 16'-3" x 14'-1"

Lower Level Bar Area: 8'-8" x 9'-3"





Dimensions

Farmhouse Dining: 12'-11" x 9'-10"

Kitchen: 12'-11" x 13'-6"

Kitchen Island: 8'-8" x 4'-0"

Boot Room: 6'-11" x 3'-9"

Garage: 21'-7" x 17'-4"

Storage: 11'-8" x 7'-11"

Living: 13'-4" x 11'-0"

PR: 3'-0" x 7'-0"

Entry: 5'-5" x 11'-0"

Elevation 1 Porch: 14'-4" x 5'-2"

Dining: 11'-5" x 12'-1"

Great Room: 15'-11" x 19'-5"

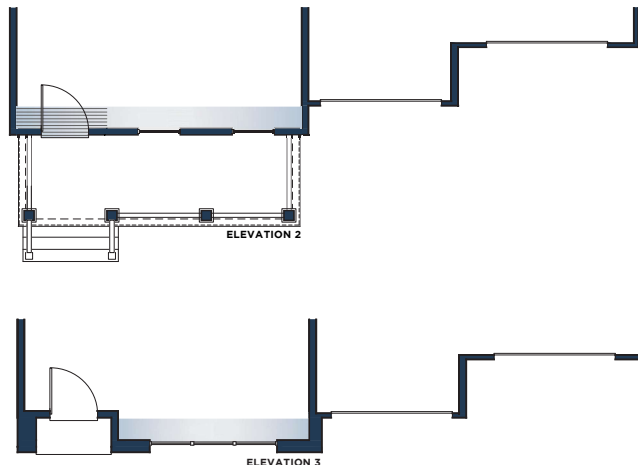
W.F.H.: 11'-5" x 10'-5"

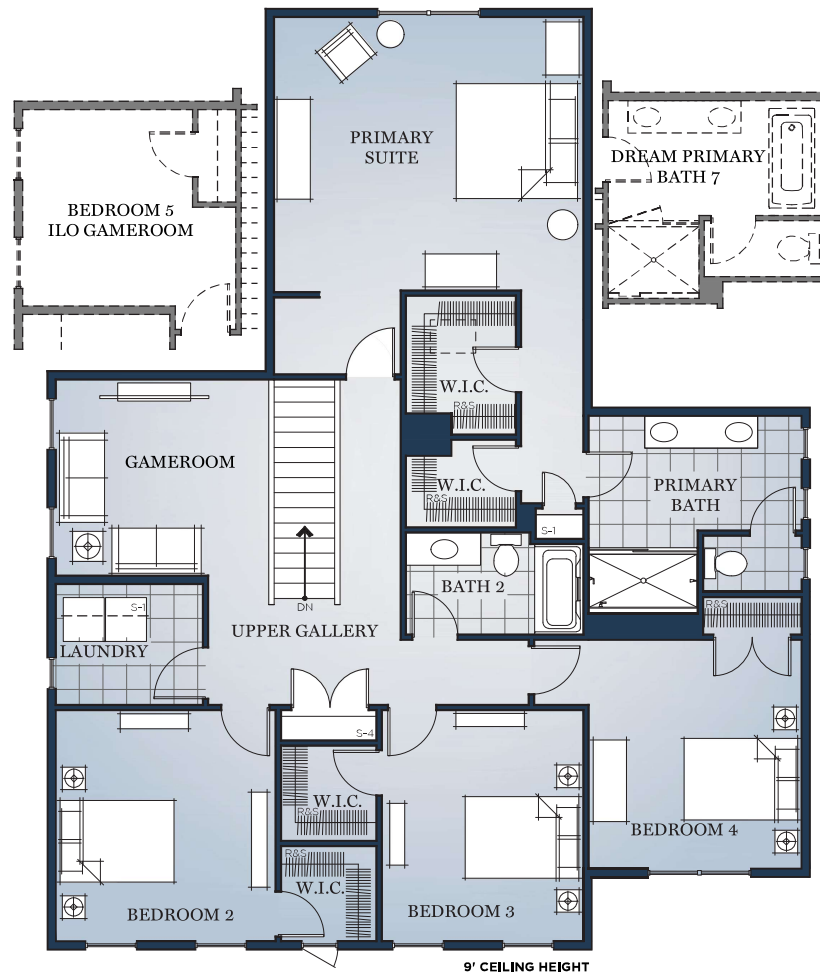
The Spot: 11'-7" x 10'-8"

3 Car Garage: 21'-7" x 36'-7"

Secondary Suite: 11'-5" x 11'-0"

Elevation 2 Porch: 18'-2" x 6'-3"





Dimensions

Primary Bedroom: 16'-11" x 15'-0"
Primary W.I.C.1: 6'-0" x 7'-7"
Primary W.I.C.2: 5'-11" x 4'-9"
Primary Bath: 11'-7" x 6'-3"
Laundry: 8'-0" x 6'-7"
Bedroom 4: 11'-7" x 12'-6"
Bedroom 3: 11'-0" x 12'-8"
W.I.C.3: 5'-2" x 5'-2"
Bedroom 2: 12'-0" x 12'-8"
W.I.C.2: 5'-2" x 5'-2"
Bath 2: 7'-0" x 5'-6"
Gameroom: 11'-7" x 10'-9"
Bedroom ILO Gameroom: 11'-7" x 10'-9"
Primary Bath 7: 11'-7" x 6'-3"

